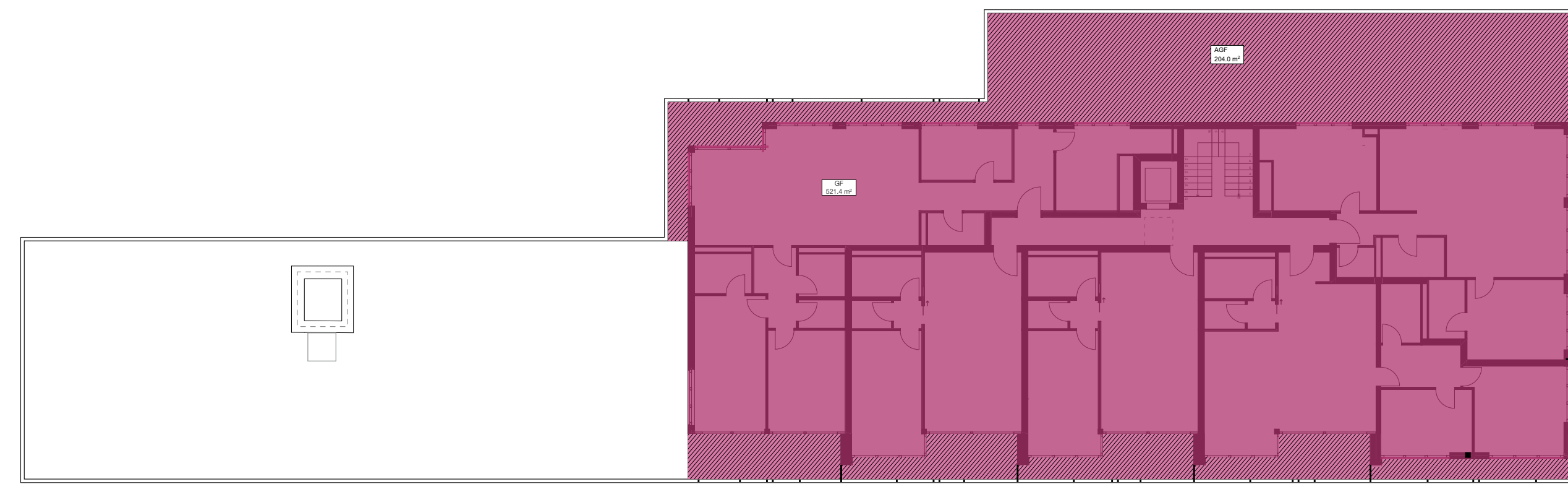
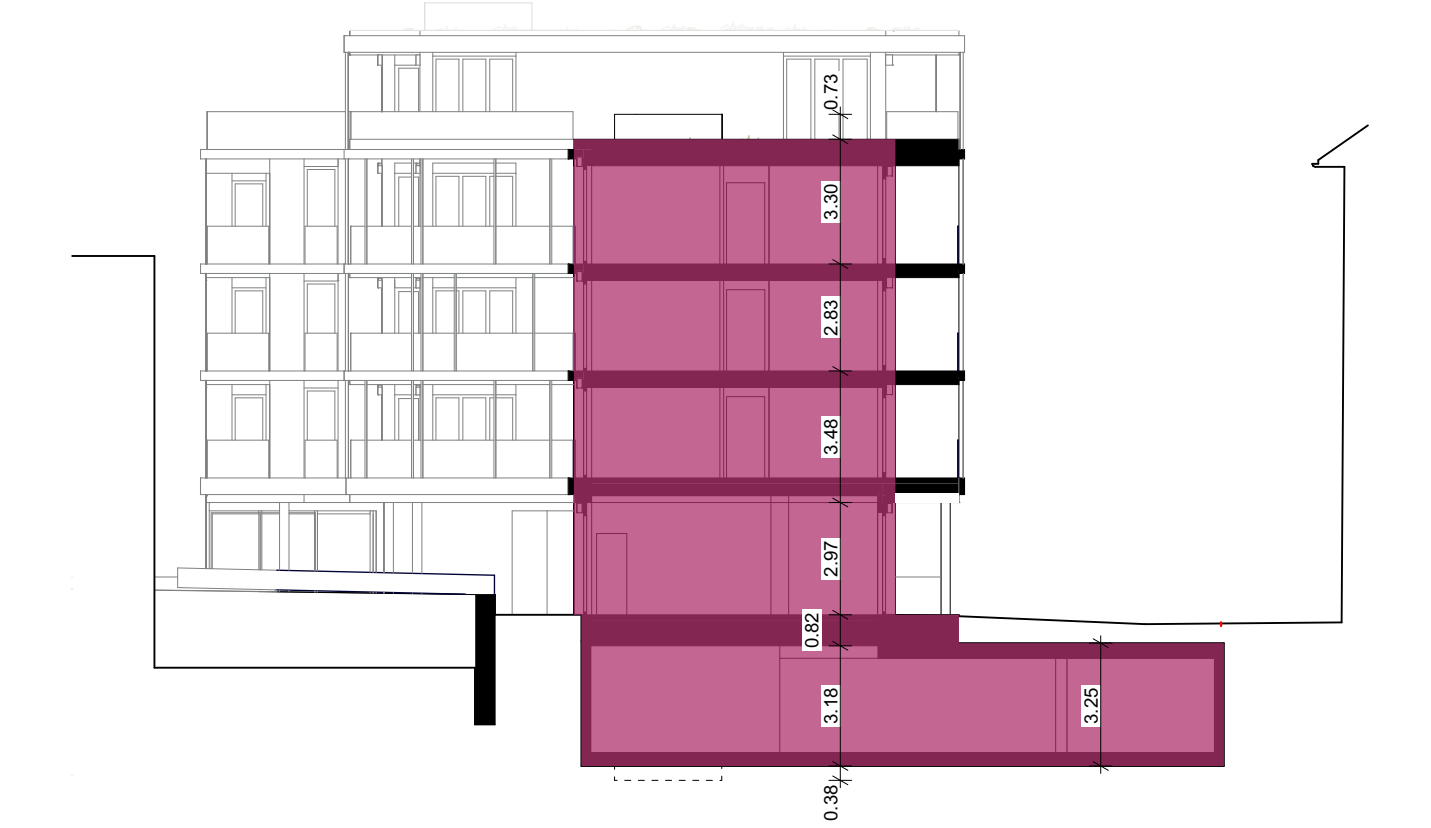


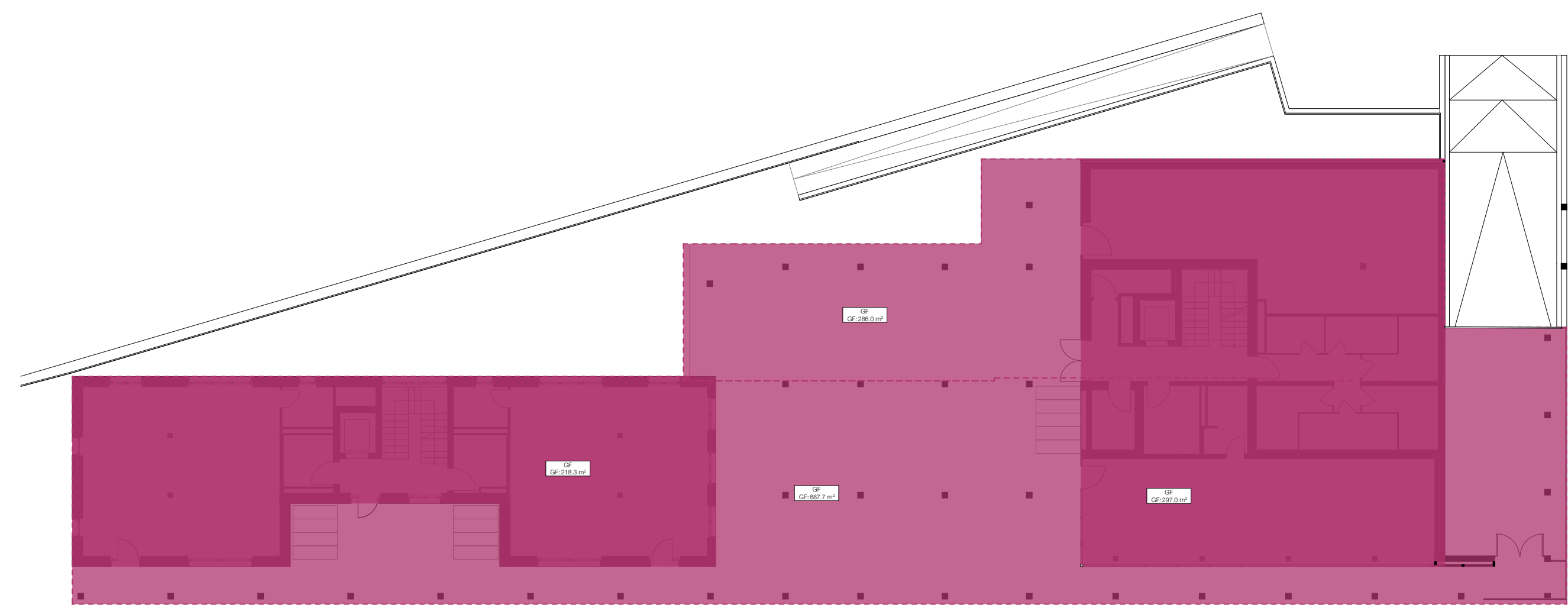
1.OG



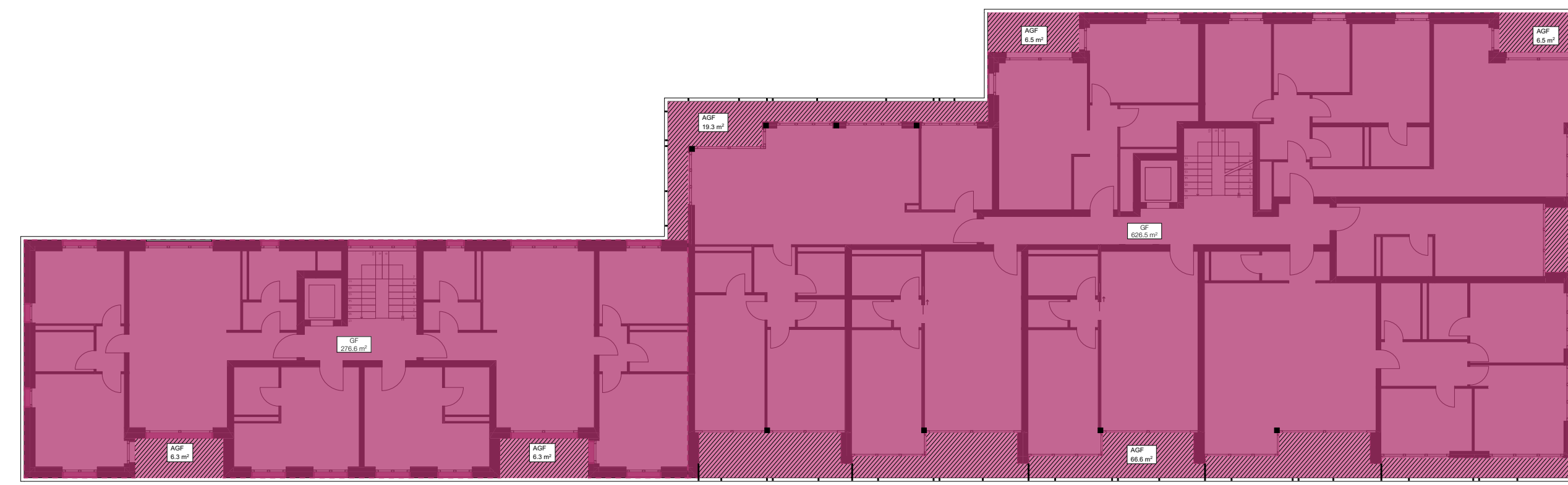
4.OG



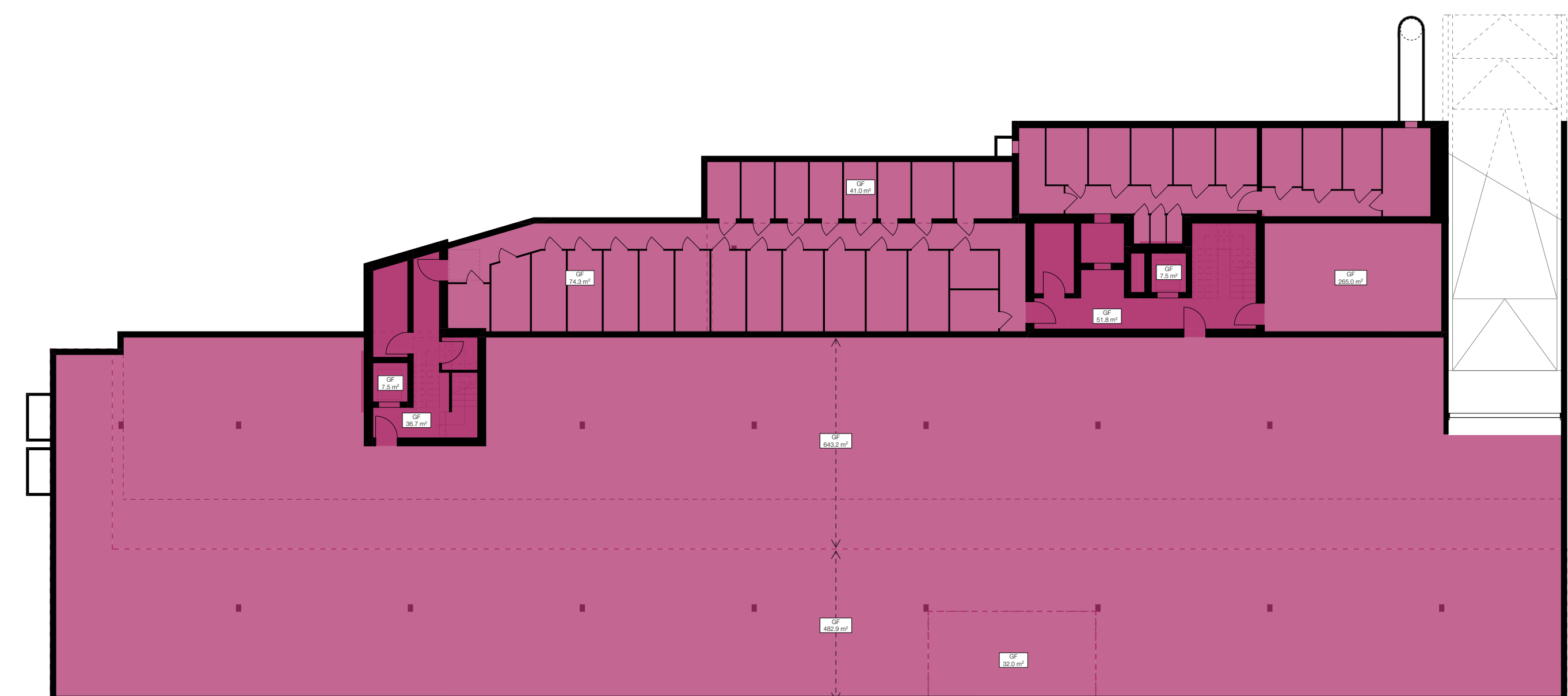
Geschossfläche			
Geschoss	Fläche	Höhe	Volumen
GF - Oberirdisch			
EG	515.3	2.97	1'530.44
	286.0	0.60	171.60
	687.7	0.82	563.91
1.OG	903.1	3.48	3'142.78
2.OG	903.1	2.83	2'555.77
3.OG	276.60	3.30	912.78
	626.50	3.03	1'898.29
4.OG	521.4	3.20	1'668.48
DG	15.0	0.73	10.95
	3'746.00 m²		12'455.00 m³
GF - Unterirdisch			
1.UG	15.0	0.38	5.70
	32.0	2.75	88.00
	88.5	0.16	14.16
	598.2	3.25	1'944.15
	265.0	3.40	901.00
	643.2	3.18	2'045.37
	1'538.40 m²		4'998.38 m³
	5'284.40 m²		17'453.38 m³



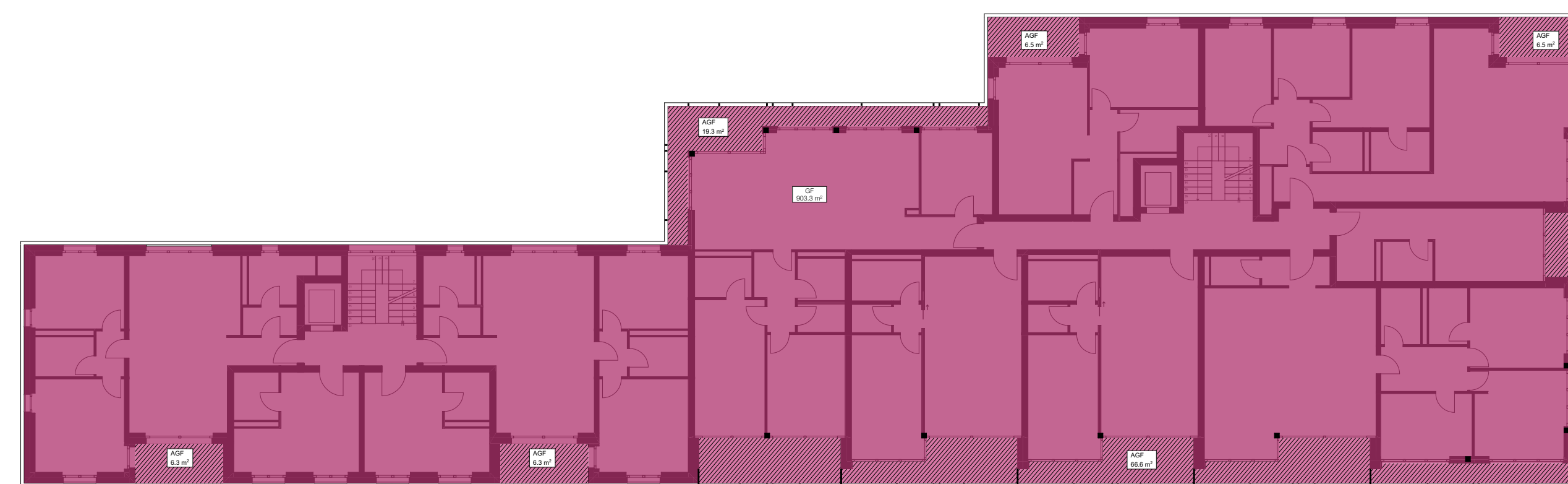
EG



3.OG



1.UG



2.OG

Ersatzneubau Sauerländer-Areal

Laurenzenvorstadt 85-87, 5000 Aarau
Parzelle 1104

Baugesuch

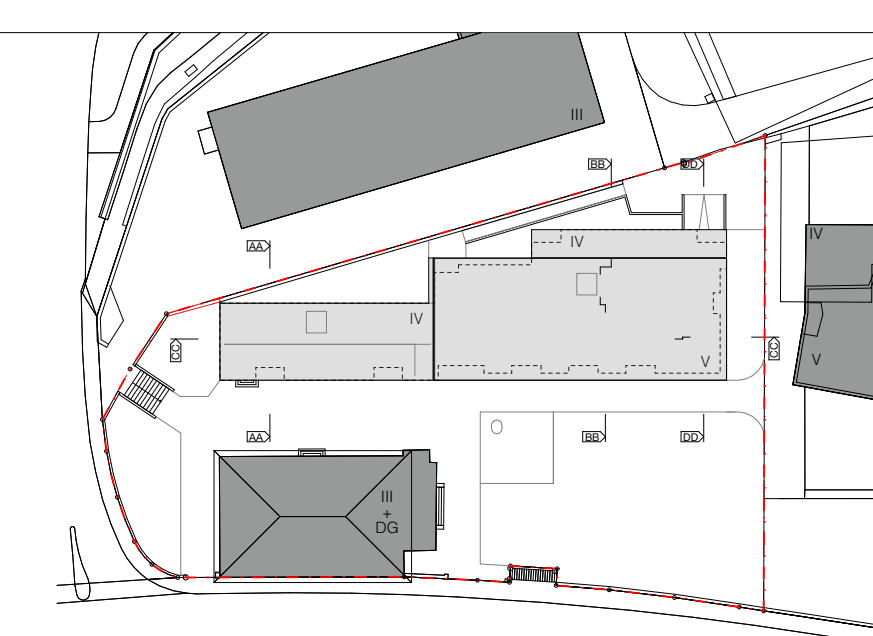
Geschossfläche

Plannummer: 602

Nr. Projekt: 24.024.2
Datum: 04.05.2026

Nüßpunkt / OKFF EG: +1.00 + 383.65 m ü. M.
Mst.: 1:200
Planformat: A0 84 / 1.19

Legende
 - Bestand
 - Abruch
 - Neu
 - Grundstücksgrenze



Grundigentümer	Bauherrschaft	Projektverfasser
Swisscanto Fondstiftung AG Blauenbühlstrasse 9 CH-8001 Zürich silvan.stoock@stgk.ch T: +41 44 202 20 49	EROP Real Estate & Partners AG Via E. Bossi 9 CH-6900 Lugano us@erop.ch T: +41 91 921 26 67	EROP Real Estate & Partners AG Via E. Bossi 9 CH-6900 Lugano us@erop.ch T: +41 91 921 26 67
Zürich, 04.05.2026	Lugano, 04.05.2026	Lugano, 04.05.2026