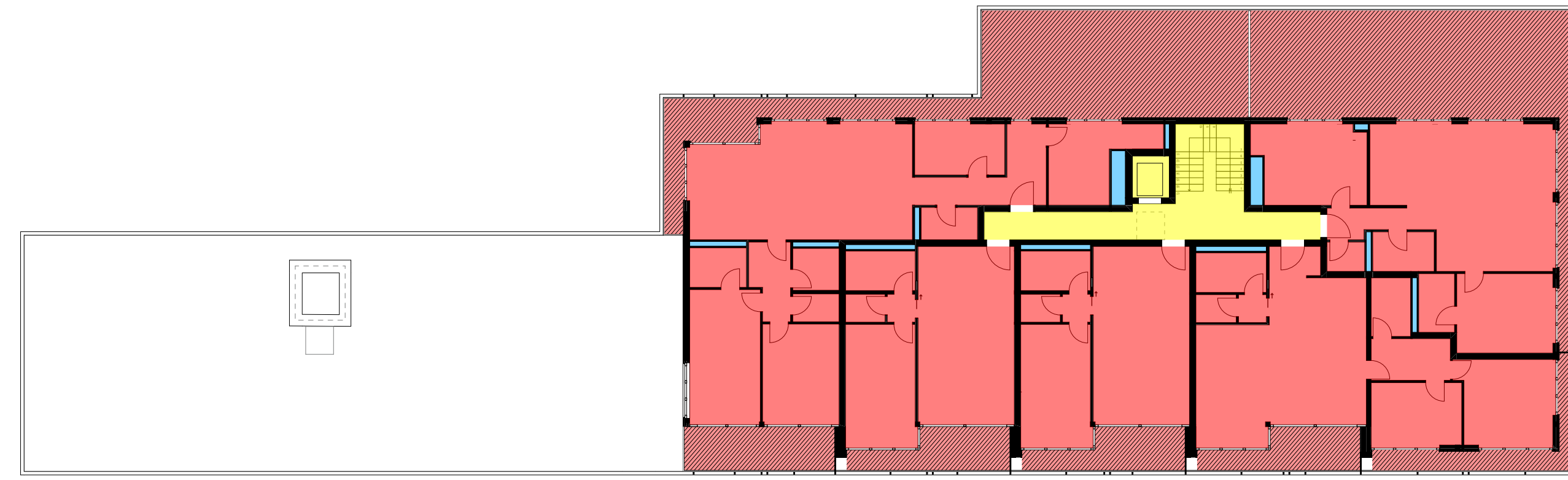
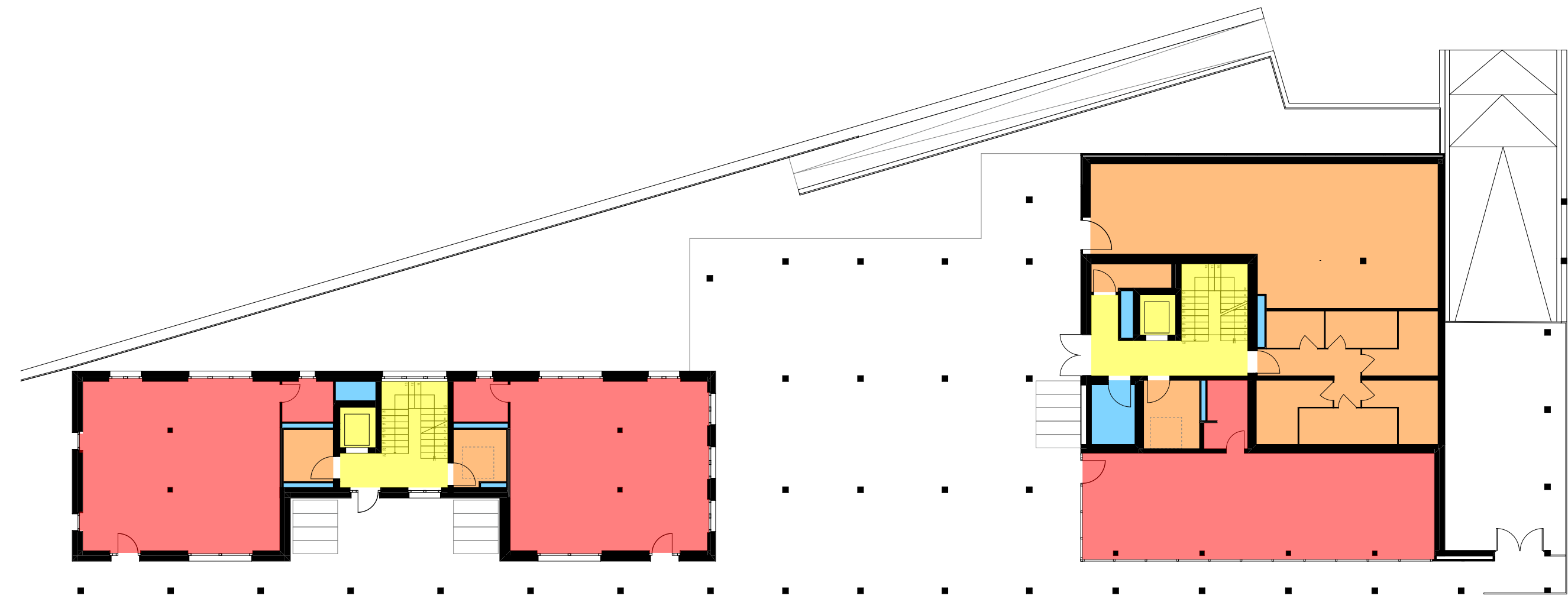


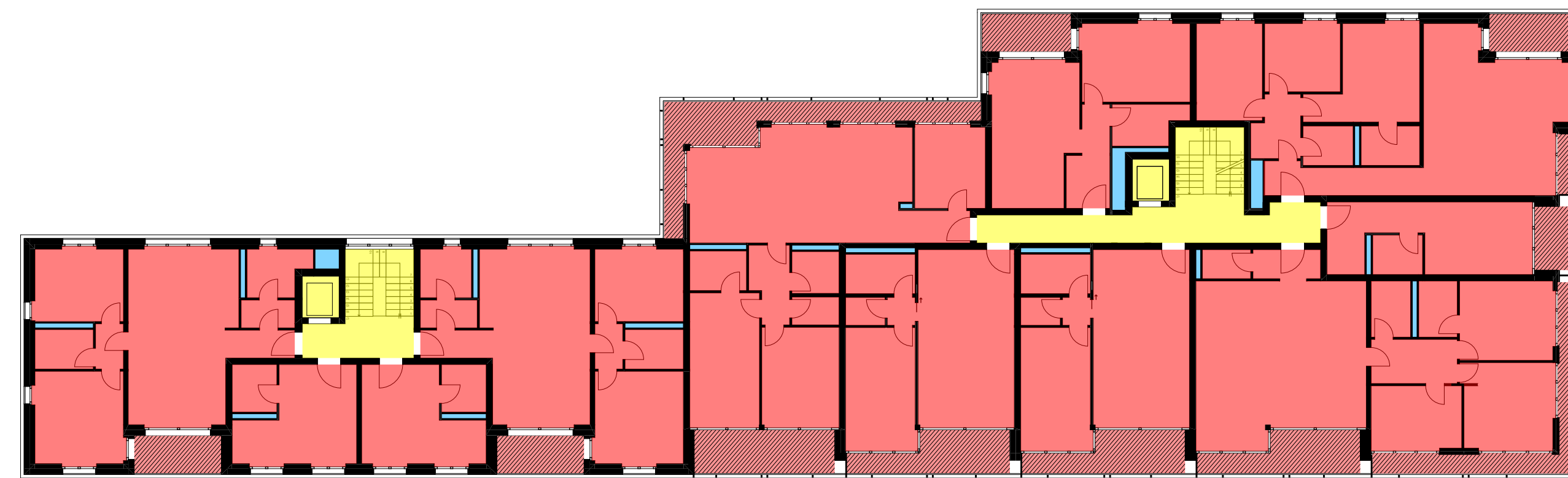
1.OG



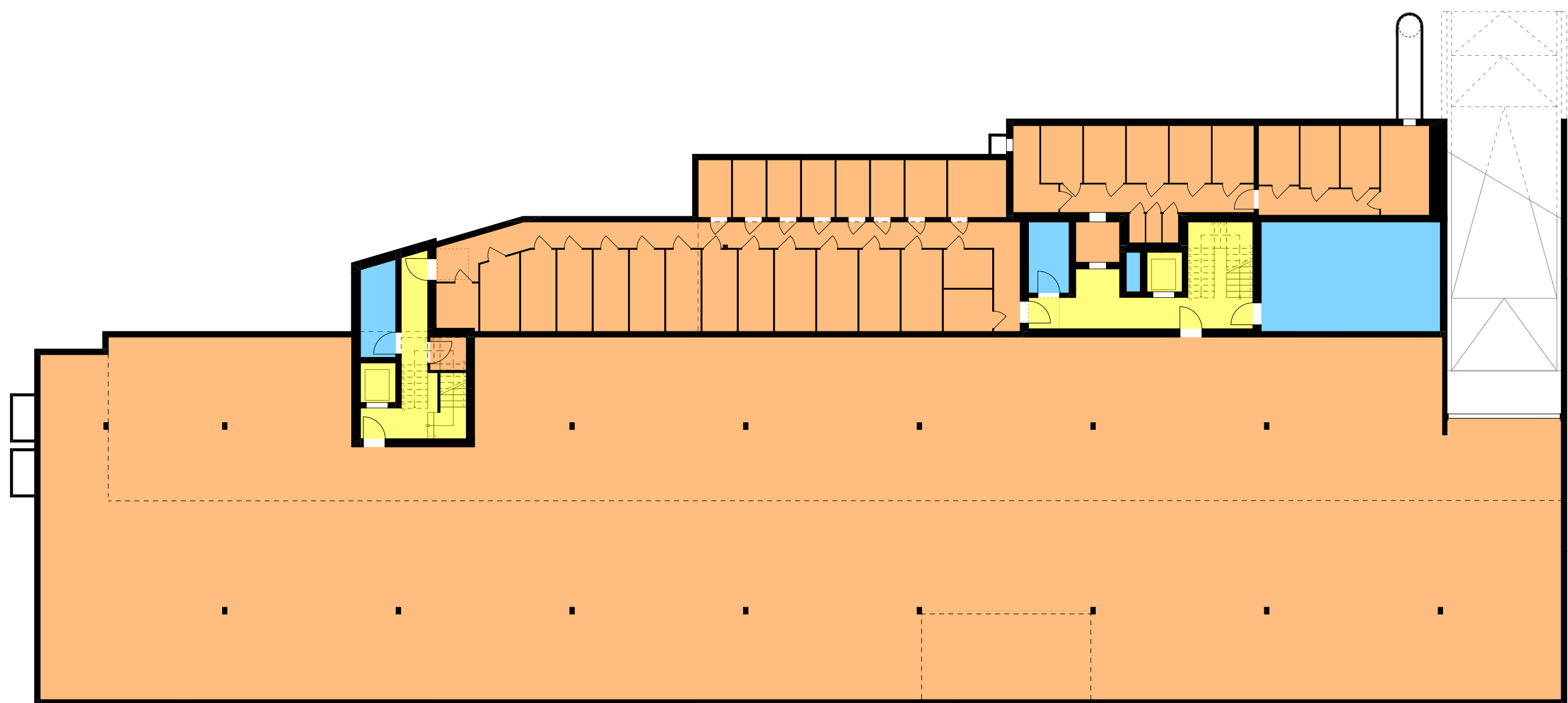
4.OG



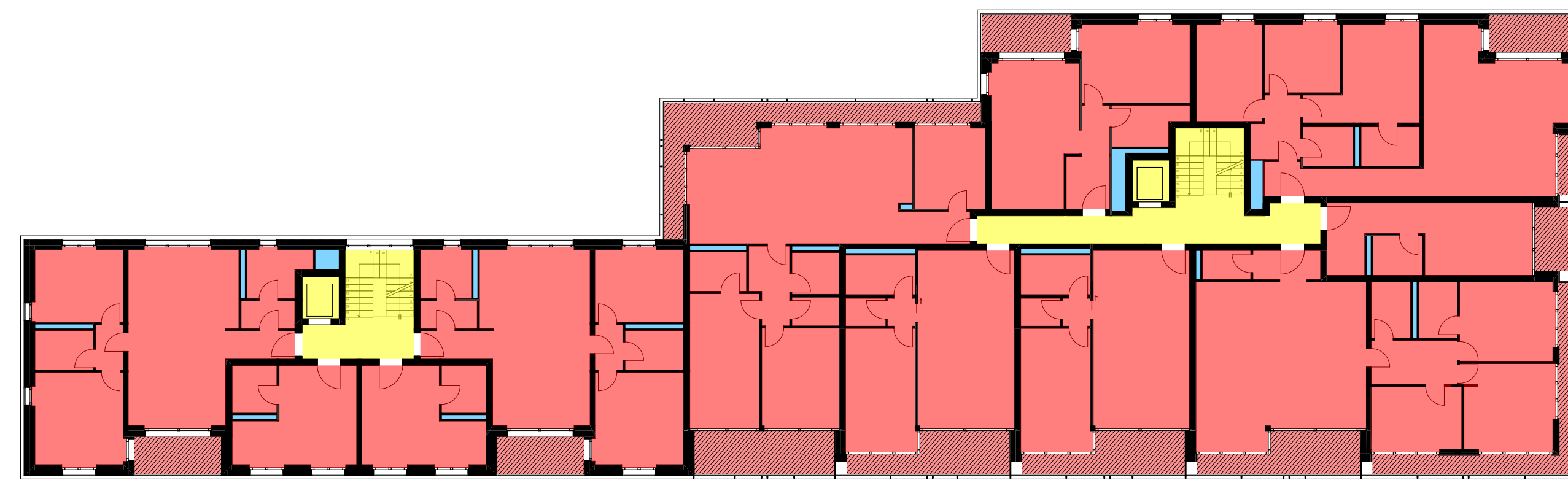
EG



3.OG



1.UG



2.OG

Nettogeschossfläche	
Geschoss	Flächen
ANF	
1.OG	107.1
2.OG	107.1
3.OG	107.1
4.OG	200.0
	521.3 m²
FF	
1.UG	54.7
EG	12.1
1.OG	10.0
2.OG	10.1
3.OG	10.1
4.OG	6.6
	103.6 m²
HNF	
EG	225.4
1.OG	717.2
2.OG	717.2
3.OG	717.2
4.OG	425.2
	2802.2 m²
NNF	
1.UG	1'341.3
EG	151.3
	1'492.6 m²
VF	
1.UG	50.9
EG	46.3
1.OG	53.3
2.OG	53.2
3.OG	53.2
4.OG	32.1
	289.0 m²
	5'208.7 m²

Ersatzneubau Sauerländer-Areal

Laurenzenvorstadt 85-87, 5000 Aarau
Parzelle 1104

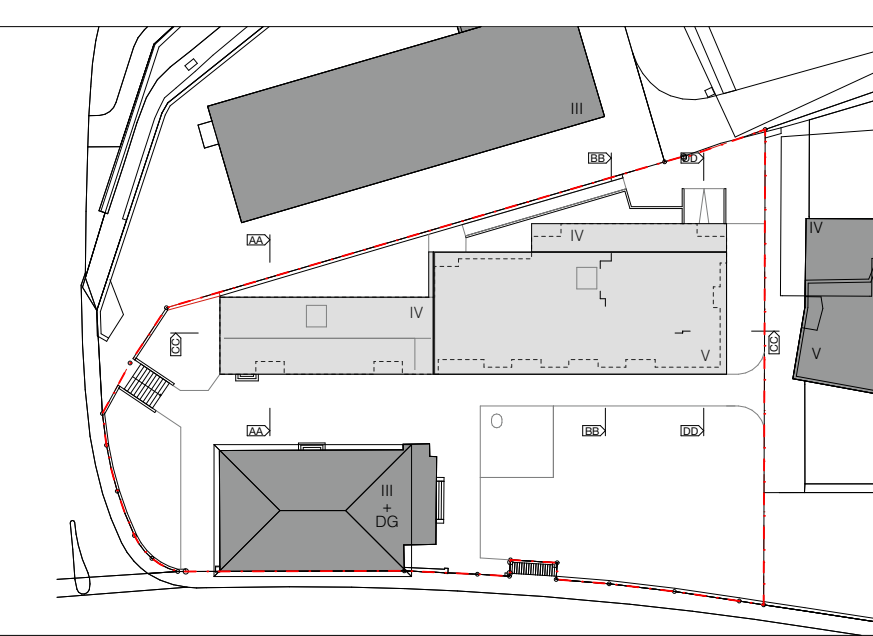
Baugesuch

Nettogeschossfläche

Plannummer: 023

Nr. Projekt: 24.024.2
Datum: 04.05.2026
Nüßli / CKFF ED: +1-000 + 383.65 m ü. M.
Mst.: 1:200, 1:0.67, 1:0.34
Planformat: A0 84 / 1.19

- Legende**
- Bestand
 - Abbruch
 - Neu
 - Grundstücksgrenze



Grundigentümer	Bauherrschaft	Projektverfasser
Swisscanto Fondstiftung AG Blauenbühlstrasse 9 CH-8001 Zürich silvan.stoock@stz.ch T: +41 44 202 20 49 Zürich, 04.05.2026	EROP Real Estate & Partners AG Via E. Bossi 9 CH-6900 Lugano us@erop.ch T: +41 91 921 26 67 Lugano, 04.05.2026	EROP Real Estate & Partners AG Via E. Bossi 9 CH-6900 Lugano us@erop.ch T: +41 91 921 26 67 Lugano, 04.05.2026