



BAUVORHABEN:
NEUBAU WOHNHAUS, GARTENSTRASSE 9, 5032 AARAU-ROHR

BAUHERR:
BAUKONSORTIUM ASAH, HAUPTSTRASSE 57, 5032 AARAU-ROHR

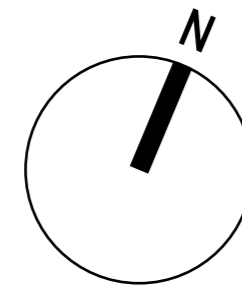
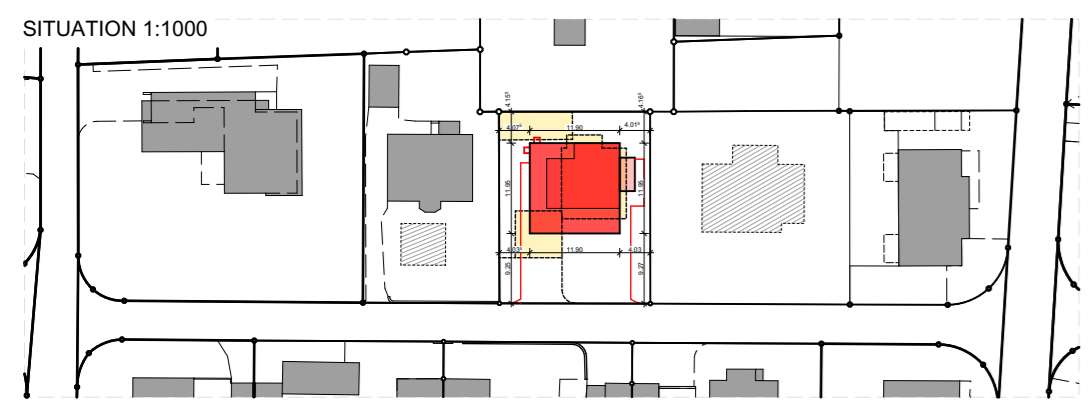
MEINRAD MÜLLER
ARCHITEKTUR + BAULEITUNG AG

NIEDERLENZERSTRASSE 10
5600 LENZBURG

ZEICHNER: JG DATUM: 07.05.2026
PROJEKTLEITER: MS FORMAT: 84/59.4

1:100

T: +41 62 886 11 00
mail@meinrad-mueller.ch



OK FERTIG BODEN EG = ± 0.00 = 377.73 M.ü.M

EINGESEHEN UND EINVERSTANDEN:

BAUHERR:
BAUKONSORTIUM ASAH
HAUPTSTRASSE 57, 5032 AARAU-ROHR

ARCHITEKT:
MEINRAD MÜLLER ARCHITEKTUR + BAULEITUNG AG
NIEDERLENZERSTRASSE 10
5600 LENZBURG

GRUNDEIGENTÜMER:
JANINE SCHUMACHER, WERNER SCHUMACHER
GARTENSTRASSE 9, 5032 AARAU-ROHR

LEGENDE KANALISATION

- PP (POLYPROPYLEN) WAS-H HÄUSLICHES ABWASSER
- PP (POLYPROPYLEN) WAS-R SCHMUTZWASSER (REGENWASSER)
- PP (POLYPROPYLEN) WAR-R REINWASSER (REGENWASSER)

LEGENDE WERKLEITUNGEN (BESTEHENDE LEITUNGSFÜHRUNG)

- ABWASSER
- ABRUCH BESTEHENDE KANALISATIONSLEITUNGEN
- WASSERVERSORGUNG
- ELEKTRIZITÄT
- SUNRISE UPC
- SWISSCOM
- GAS

SCHMUTZWASSERABFLUSS (Q_{ww})

WAS-H - HÄUSLICHES ABWASSER

Item	DU	Q _{ww} (l/s)	Q _{ww} (l/s)
1	4.8	1.095	1.095
	3x SPÜLBECKEN	0.8	2.4
	3x GESCHIRRSPÜLER	0.8	2.4
2	2.1	0.725	0.725
	1x WASCHMASCHINE	0.8	0.8
	1x TUMBLER	0.5	0.5
	1x SPÜLBECKEN	0.8	0.8
3	2.1	0.725	0.725
	1x WASCHMASCHINE	0.8	0.8
	1x TUMBLER	0.5	0.5
	1x SPÜLBECKEN	0.8	0.8
4	9.3	1.525	1.525
	3x WASCHTISCH	0.5	1.5
	3x KLOSETT	2.0	6.0
	3x DUSCHE	0.6	1.8
5	2.1	0.725	0.725
	1x WASCHMASCHINE	0.8	0.8
	1x TUMBLER	0.5	0.5
	1x SPÜLBECKEN	0.8	0.8
6	9.3	1.525	1.525
	3x WASCHTISCH	0.5	1.5
	3x KLOSETT	2.0	6.0
	3x DUSCHE	0.6	1.8

TOTAL: 6.32 l/s

REGENWASSERABFLUSS (Q_R)

WAR-R - REINWASSER (REGENWASSER)

1	Q _R = 1.63 l/s
	FLACHDACH MIT KIES
	68.42 m ² x 0.03 x 0.7 = 1.44 l/s

TOTAL: 1.44 l/s

REGENWASSERABFLUSS (Q_R)

WAS-R - SCHMUTZWASSER (REGENWASSER)

1	Q _R = 0.84 l/s
	BEGEHBARE TERRASSE
	22.45 m ² x 0.03 x 1.0 = 0.67 l/s
2	Q _R = 1.32 l/s
	BEGEHBARE TERRASSE
	40.54 m ² x 0.03 x 1.0 = 1.22 l/s

TOTAL: 1.89 l/s

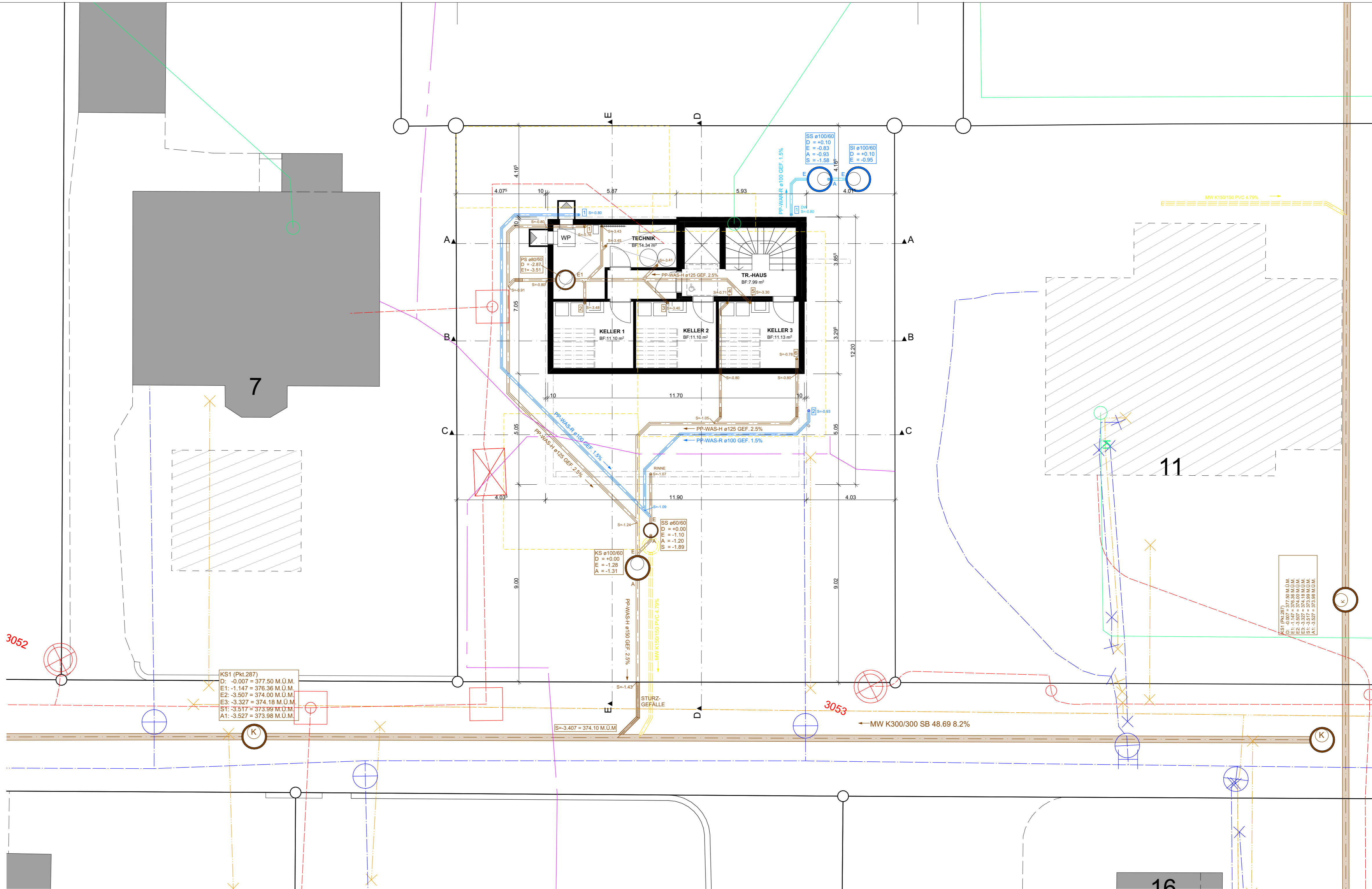
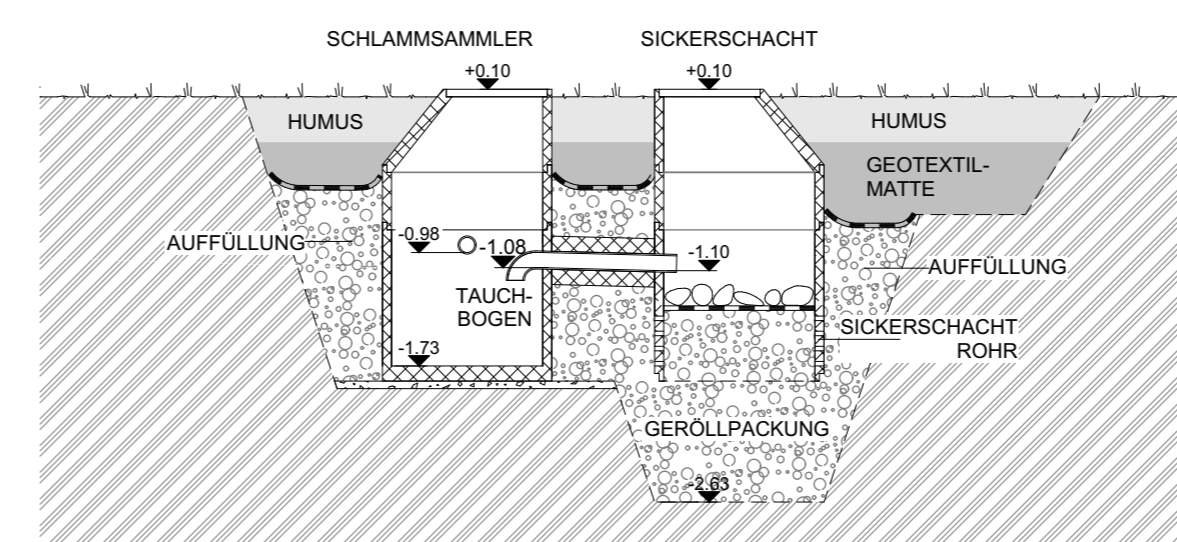
VERSICKERUNG:

GEMÄSS AUSZUG AUS DER VERSICKERUNGSKARTE DES KANTONS, IST EINE VERSICKERUNG DES ANFALLENDEN WASSERS IN DIESEM GEBIET **UNEINGESCHRÄNKT** MÖGLICH. DAS ANFALLENDE DACHWASSER WIRD ÜBER EINEN SCHLAMMSAMMLER ZU EINEM SICKERSCHACHT GEFÜHRT UND DORT VERSICKERT. (GEM. DETAIL)

WERKLEITUNGEN:

DIE WERKLEITUNGEN WURDEN AUS DEN PLÄNEN DER JEWELIGEN ZUSTÄNDIGEN GEWERKEN ÜBERNOMMEN UND ENTSPRECHEN DER HEUTIGEN SITUATION. NACH ERHALT DER BAUBEWILLIGUNG UND VOR BAUBEGINN, MÜSSEN DIE ÜBERGABEPUNKTE UND DIE NEUEN ZULEITUNGEN ZUM TECHNIKRUM MIT DEN ZUSTÄNDIGEN ÄMTER BESPROCHEN WERDEN.

DETAIL VERSICKERUNGSANLAGE 1:50



KS1 (PH.287)
D: -0.007 = 377.50 M.U.M.
E1: -1.147 = 376.36 M.U.M.
E2: -3.507 = 374.00 M.U.M.
E3: -3.327 = 374.18 M.U.M.
SY: -3.517 = 373.99 M.U.M.
A1: -3.527 = 373.98 M.U.M.

KS1 (PH.287)
D: -0.007 = 377.50 M.U.M.
E1: -1.147 = 376.36 M.U.M.
E2: -3.507 = 374.00 M.U.M.
E3: -3.327 = 374.18 M.U.M.
SY: -3.517 = 373.99 M.U.M.
A1: -3.527 = 373.98 M.U.M.

KS1 (PH.287)
D: -0.007 = 377.50 M.U.M.
E1: -1.147 = 376.36 M.U.M.
E2: -3.507 = 374.00 M.U.M.
E3: -3.327 = 374.18 M.U.M.
SY: -3.517 = 373.99 M.U.M.
A1: -3.527 = 373.98 M.U.M.

KS1 (PH.287)
D: -0.007 = 377.50 M.U.M.
E1: -1.147 = 376.36 M.U.M.
E2: -3.507 = 374.00 M.U.M.
E3: -3.327 = 374.18 M.U.M.
SY: -3.517 = 373.99 M.U.M.
A1: -3.527 = 373.98 M.U.M.

KS1 (PH.287)
D: -0.007 = 377.50 M.U.M.
E1: -1.147 = 376.36 M.U.M.
E2: -3.507 = 374.00 M.U.M.
E3: -3.327 = 374.18 M.U.M.
SY: -3.517 = 373.99 M.U.M.
A1: -3.527 = 373.98 M.U.M.

KS1 (PH.287)
D: -0.007 = 377.50 M.U.M.
E1: -1.147 = 376.36 M.U.M.
E2: -3.507 = 374.00 M.U.M.
E3: -3.327 = 374.18 M.U.M.
SY: -3.517 = 373.99 M.U.M.
A1: -3.527 = 373.98 M.U.M.

KS1 (PH.287)
D: -0.007 = 377.50 M.U.M.
E1: -1.147 = 376.36 M.U.M.
E2: -3.507 = 374.00 M.U.M.
E3: -3.327 = 374.18 M.U.M.
SY: -3.517 = 373.99 M.U.M.
A1: -3.527 = 373.98 M.U.M.

KS1 (PH.287)
D: -0.007 = 377.50 M.U.M.
E1: -1.147 = 376.36 M.U.M.
E2: -3.507 = 374.00 M.U.M.
E3: -3.327 = 374.18 M.U.M.
SY: -3.517 = 373.99 M.U.M.
A1: -3.527 = 373.98 M.U.M.

KS1 (PH.287)
D: -0.007 = 377.50 M.U.M.
E1: -1.147 = 376.36 M.U.M.
E2: -3.507 = 374.00 M.U.M.
E3: -3.327 = 374.18 M.U.M.
SY: -3.517 = 373.99 M.U.M.
A1: -3.527 = 373.98 M.U.M.

KS1 (PH.287)
D: -0.007 = 377.50 M.U.M.
E1: -1.147 = 376.36 M.U.M.
E2: -3.507 = 374.00 M.U.M.
E3: -3.327 = 374.18 M.U.M.
SY: -3.517 = 373.99 M.U.M.
A1: -3.527 = 373.98 M.U.M.

KS1 (PH.287)
D: -0.007 = 377.50 M.U.M.
E1: -1.147 = 376.36 M.U.M.
E2: -3.507 = 374.00 M.U.M.
E3: -3.327 = 374.18 M.U.M.
SY: -3.517 = 373.99 M.U.M.
A1: -3.527 = 373.98 M.U.M.

KS1 (PH.287)
D: -0.007 = 377.50 M.U.M.
E1: -1.147 = 376.36 M.U.M.
E2: -3.507 = 374.00 M.U.M.
E3: -3.327 = 374.18 M.U.M.
SY: -3.517 = 373.99 M.U.M.
A1: -3.527 = 373.98 M.U.M.

KS1 (PH.287)
D: -0.007 = 377.50 M.U.M.
E1: -1.147 = 376.36 M.U.M.
E2: -3.507 = 374.00 M.U.M.
E3: -3.327 = 374.18 M.U.M.
SY: -3.517 = 373.99 M.U.M.
A1: -3.527 = 373.98 M.U.M.

KS1 (PH.287)
D: -0.007 = 377.50 M.U.M.
E1: -1.147 = 376.36 M.U.M.
E2: -3.507 = 374.00 M.U.M.
E3: -3.327 = 374.18 M.U.M.
SY: -3.517 = 373.99 M.U.M.
A1: -3.527 = 373.98 M.U.M.

KS1 (PH.287)
D: -0.007 = 377.50 M.U.M.
E1: -1.147 = 376.36 M.U.M.
E2: -3.507 = 374.00 M.U.M.
E3: -3.327 = 374.18 M.U.M.
SY: -3.517 = 373.99 M.U.M.
A1: -3.527 = 373.98 M.U.M.

KS1 (PH.287)
D: -0.007 = 377.50 M.U.M.
E1: -1.147 = 376.36 M.U.M.
E2: -3.507 = 374.00 M.U.M.
E3: -3.327 = 374.18 M.U.M.
SY: -3.517 = 373.99 M.U.M.
A1: -3.527 = 373.98 M.U.M.

KS1 (PH.287)
D: -0.007 = 377.50 M.U.M.
E1: -1.147 = 376.36 M.U.M.
E2: -3.507 = 374.00 M.U.M.
E3: -3.327 = 374.18 M.U.M.
SY: -3.517 = 373.99 M.U.M.
A1: -3.527 = 373.98 M.U.M.

KS1 (PH.287)
D: -0.007 = 377.50 M.U.M.
E1: -1.147 = 376.36 M.U.M.
E2: -3.507 = 374.00 M.U.M.
E3: -3.327 = 374.18 M.U.M.
SY: -3.517 = 373.99 M.U.M.
A1: -3.527 = 373.98 M.U.M.

KS1 (PH.287)
D: -0.007 = 377.50 M.U.M.
E1: -1.147 = 376.36 M.U.M.
E2: -3.507 = 374.00 M.U.M.
E3: -3.327 = 374.18 M.U.M.
SY: -3.517 = 373.99 M.U.M.
A1: -3.527 = 373.98 M.U.M.

KS1 (PH.287)
D: -0.007 = 377.50 M.U.M.
E1: -1.147 = 376.36 M.U.M.
E2: -3.507 = 374.00 M.U.M.
E3: -3.327 = 374.18 M.U.M.
SY: -3.517 = 373.99 M.U.M.
A1: -3.527 = 373.98 M.U.M.

KS1 (PH.287)
D: -0.007 = 377.50 M.U.M.
E1: -1.147 = 376.36 M.U.M.
E2: -3.507 = 374.00 M.U.M.
E3: -3.327 = 374.18 M.U.M.
SY: -3.517 = 373.99 M.U.M.
A1: -3.527 = 373.98 M.U.M.

KS1 (PH.287)
D: -0.007 = 377.50 M.U.M.
E1: -1.147 = 376.36 M.U.M.
E2: -3.507 = 374.00 M.U.M.
E3: -3.327 = 374.18 M.U.M.
SY: -3.517 = 373.99 M.U.M.
A1: -3.527 = 373.98 M.U.M.

KS1 (PH.287)
D: -0.007 = 377.50 M.U.M.
E1: -1.147 = 376.36 M.U.M.
E2: -3.507 = 374.00 M.U.M.
E3: -3.327 = 374.18 M.U.M.
SY: -3.517 = 373.99 M.U.M.
A1: -3.527 = 373.98 M.U.M.

KS1 (PH.287)
D: -0.007 = 377.50 M.U.M.
E1: -1.147 = 376.36 M.U.M.
E2: -3.507 = 374.00 M.U.M.
E3: -3.327 = 374.18 M.U.M.
SY: -3.517 = 373.99 M.U.M.
A1: -3.527 = 373.98 M.U.M.

KS1 (PH.287)
D: -0.007 = 377.50 M.U.M.
E1: -1.147 = 376.36 M.U.M.
E2: -3.507 = 374.00 M.U.M.
E3: -3.327 = 374.18 M.U.M.
SY: -3.517 = 373.99 M.U.M.
A1: -3.527 = 373.98 M.U.M.

KS1 (PH.287)
D: -0.007 = 377.50 M.U.M.
E1: -1.147 = 376.36 M.U.M.
E2: -3.507 = 374.00 M.U.M.
E3: -3.327 = 374.18 M.U.M.
SY: -3.517 = 373.99 M.U.M.
A1: -3.527 = 373.98 M.U.M.

KS1 (PH.287)
D: -0.007 = 377.50 M.U.M.
E1: -1.147 = 376.36 M.U.M.
E2: -3.507 = 374.00 M.U.M.
E3: -3.327 = 374.18 M.U.M.
SY: -3.517 = 373.99 M.U.M.
A1: -3.527 = 373.98 M.U.M.

KS1 (PH.287)
D: -0.007 = 377.50 M.U.M.
E1: -1.147 = 376.36 M.U.M.
E2: -3.507 = 374.00 M.U.M.
E3: -3.327 = 374.18 M.U.M.
SY: -3.517 = 373.99 M.U.M.
A1: -3.527 = 373.98 M.U.M.

KS1 (PH.287)
D: -0.007 = 377.50 M.U.M.
E1: -1.147 = 376.36 M.U.M.
E2: -3.507 = 374.00 M.U.M.
E3: -3.327 = 374.18 M.U.M.
SY: -3.517 = 373.99 M.U.M.
A1: -3.527 = 373.98 M.U.M.

KS1 (PH.287)
D: -0.007 = 377.50 M.U.M.
E1: -1.147 = 376.36 M.U.M.
E2: -3.507 = 374.00 M.U.M.
E3: -3.327 = 374.18 M.U.M.
SY: -3.517 = 373.99 M.U.M.
A1: -3.527 = 373.98 M.U.M.

KS1 (PH.287)
D: -0.007 = 377.50 M.U.M.
E1: -1.147 = 376.36 M.U.M.
E2: -3.507 = 374.00 M.U.M.
E3: -3.327 = 374.18 M.U.M.
SY: -3.517 = 373.99 M.U.M.
A1: -3.527 = 373.98 M.U.M.

KS1 (PH.287)
D: -0.007 = 377.50 M.U.M.
E1: -1.147 = 376.36 M.U.M.
E2: -3.507 = 374.00 M.U.M.
E3: -3.327 = 374.18 M.U.M.
SY: -3.517 = 373.99 M.U.M.
A1: -3.527 = 373.98 M.U.M.

KS1 (PH.287)
D: -0.007 = 377.50 M.U.M.
E1: -1.147 = 376.36 M.U.M.
E2: -3.507 = 374.00 M.U.M.
E3: -3.327 = 374.18 M.U.M.
SY: -3.517 = 373.99 M.U.M.
A1: -3.527 = 373.98 M.U.M.

KS1 (PH.287)
D: -0.007 = 377.50 M.U.M.
E1: -1.147 = 376.36 M.U.M.
E2: -3.507 = 374.00 M.U.M.
E3: -3.327 = 374.18 M.U.M.
SY: -3.517 = 373.99 M.U.M.
A1: -3.527 = 373.98 M.U.M.

KS1 (PH.287)
D: -0.007 = 377.50 M.U.M.
E1: -1.147 = 376.36 M.U.M.
E2: -3.507 = 374.00 M.U.M.
E3: -3.327 = 374.18 M.U.M.
SY: -3.517 = 373.99 M.U.M.
A1: -3.527 = 373.98 M.U.M.

KS1 (PH.287)
D: -0.007 = 377.50 M.U.M.
E1: -1.147 = 376.36 M.U.M.
E2: -3.507 = 374.00 M.U.M.
E3: -3.327 = 374.18 M.U.M.
SY: -3.517 = 373.99 M.U.M.
A1: -3.527 = 373.98 M.U.M.

KS1 (PH.287)
D: -0.007 = 377.50 M.U.M.
E1: -1.147 = 376.36 M.U.M.
E2: -3.507 = 374.00 M.U.M.
E3: -3.327 = 374.18 M.U.M.
SY: -3.517 = 373.99 M.U.M.
A1: -3.527 = 373.98 M.U.M.

KS1 (PH.287)
D: -0.007 = 377.50 M.U.M.
E1: -1.147 = 376.36 M.U.M.
E2: -3.507 = 374.00 M.U.M.
E3: -3.327 = 374.18 M.U.M.
SY: -3.517 = 373.99 M.U.M.
A1: -3.527 = 373.98 M.U.M.

KS1 (PH.287)
D: -0.007 = 377.50 M.U.M.
E1: -1.147 = 376.36 M.U.M.
E2: -3.507 = 374.00 M.U.M.
E3: -3.327 = 374.18 M.U.M.
SY: -3.517 = 373.99 M.U.M.
A1: -3.527 = 373.98 M.U.M.

KS1 (PH.287)
D: -0.007 = 377.50 M.U.M.
E1: -1.147 = 376.36 M.U.M.
E2: -3.507 = 374.00 M.U.M.
E3: -3.327 = 374.18 M.U.M.
SY: -3.517 = 373.99 M.U.M.
A1: -3.527 = 373.98 M.U.M.

KS1 (PH.287)
D: -0.007 = 377.50 M.U.M.
E1: -1.147 = 376.36 M.U.M.
E2: -3.507 = 374.00 M.U.M.
E3: -3.327 = 374.18 M.U.M.
SY: -3.517 = 373.99 M.U.M.
A1: -3.527 = 373.98 M.U.M.

KS1 (PH.287)
D: -0.007 = 377.50 M.U.M.
E1: -1.147 = 376.36 M.U.M.
E2: -3.507 = 374.00 M.U.M.
E3: -3.327 = 374.18 M.U.M.
SY: -3.517 = 373.99 M.U.M.
A1: -3.527 = 373.98 M.U.M.

KS1 (PH.287)
D: -0.007 = 377.50 M.U.M.
E1: -1.147 = 376.36 M.U.M.
E2: -3.507 = 374.00 M.U.M.
E3: -3.327 = 374.18 M.U.M.
SY: -3.517 = 373.99 M.U.M.
A1: -3.527 = 373.98 M.U.M.

KS1 (PH.287)
D: -0.007 = 377.50 M.U.M.
E1: -1.147 = 376.36 M.U.M.
E2: -3.507 = 374.00 M.U.M.
E3: -3.327 = 374.18 M.U.M.
SY: -3.517 = 373.99 M.U.M.
A1: -3.527 = 373.98 M.U.M.

KS1 (PH.287)
D: -0.007 = 377.50 M.U.M.
E1: -1.147 = 376.36 M.U.M.
E2: -3.507 = 374.00 M.U.M.
E3: -3.327 = 374.18 M.U.M.
SY: -3.517 = 373.99 M.U.M.
A1: -3.527 = 373.98 M.U.M.

KS1 (PH.287)
D: -0.007 = 377.50 M.U.M.
E1: -1.147 = 376.36 M.U.M.
E2: -3.507 = 374.00 M.U.M.
E3: -3.327 = 374.18 M.U.M.
SY: -3.517 = 373.99 M.U.M.
A1: -3.527 = 373.98 M.U.M.

KS1 (PH.287)
D: -0.00