

Plan Nr.:	3522_482	Plan	Datum	Gezeichnet	Geprüft
Mst.:	1 : 100	Rev. A	13.05.2026	Nick G.	
Grösse:	630 x 594 mm	Rev. B			
		Rev. C			
		Rev. D			
3522_482_OG_Kanalisation.PRT					

Abkuerzungen

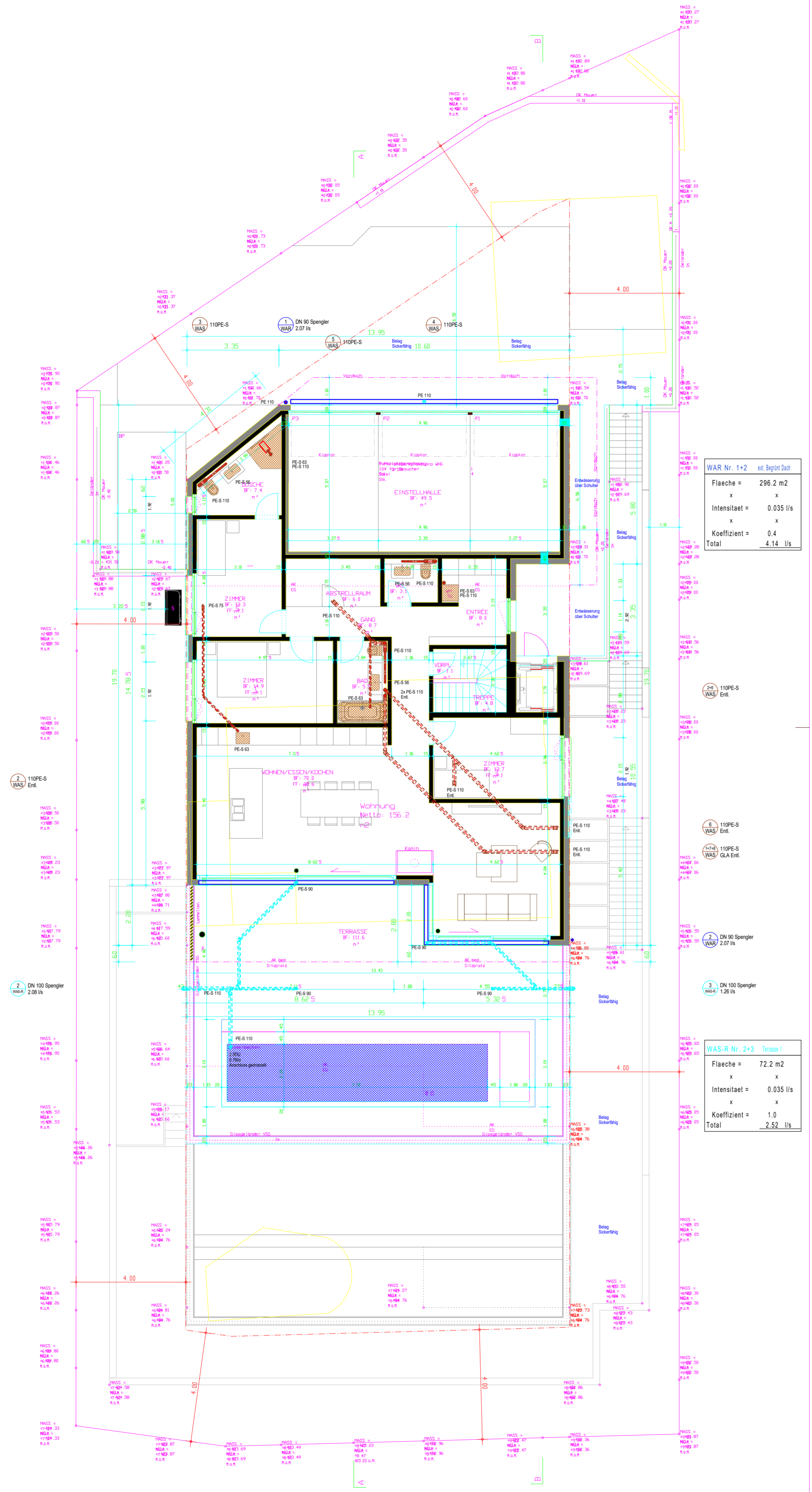
Entl. = Entleertung	A = Auslaufkote	BD = Badewanne
ZL = Zweigleertung	DU = Schmutzabwasserwert	WG = Waschtrog
S= = Solenkote	BA = Bodenwasserablauf	Du = Dusche
PU = Putzstueck	BE = Bodenwassereinlauf	SP = Spuellisch
KS = Kontrollschacht	WT = Waschtisch	WA = Waschautomat
SS = Schlammhammer	BT = Dusche	AG = Ausguss
Tb = Tauchbogen	UR = Urinoir	STZ = Steinzeug
D = Deckelkote	WC = Klosett	GG = Guss

Legende

⊕ Lagenwechsel im Geschoss	--- WAS --- Schmutzabwasser/Mischabwasser	Eingelegt	WAS
⊕ Lagenwechsel im Geschoss	--- WAS --- Schmutzabwasser/Mischabwasser	In Vormauerung/ uk. Decke	WAS
⊕ durchgehend	--- WAS --- Regenabwasser		WAR
⊕ aufwaerts verlaufend	--- WAS --- Regenabwasser / Terrassen		WAS-R
⊕ abwaerts verlaufend	--- WAS --- Schmutzabwasser/Regenabwasser	kassiert	WAS/WAR
	--- WAS --- Schmutzabwasser/Regenabwasser	saniiert / inlining	WAS/WAR

- Saemtliche horizontalen Richtungsaenderungen sind gemass SN 592000 Zif. 5.4.5 mit 2 x 45 Grad Bogen auszufuehren.

= 431.78 M u.M.
 = 431.55 M u.M.
 = 429.23 M u.M.
 = 429.08 M u.M.
 = 424.76 M u.M.
 = 424.61 M u.M.



WAR Nr. 1+2 ext. Begründ Dach

Flaeche =	296.2 m2
x	x
Intensitaet =	0.035 l/s
x	x
Koeffizient =	0.4
Total	4.14 l/s

WAS-R Nr. 2+3 Terrasse

Flaeche =	72.2 m2
x	x
Intensitaet =	0.035 l/s
x	x
Koeffizient =	1.0
Total	2.52 l/s

110PE-S Entl.
 WAS 2.07 l/s

DN 100 Spengler
 WAS 2.07 l/s

110PE-S Entl.
 WAS 1.26 l/s

110PE-S Entl.
 WAS 1.26 l/s

110PE-S Entl.
 WAS 1.26 l/s

DN 90 Spengler
 WAS 2.07 l/s

DN 100 Spengler
 WAS 1.26 l/s

110PE-S Entl.
 WAS 1.26 l/s

110PE-S Entl.
 WAS 1.26 l/s

110PE-S Entl.
 WAS 1.26 l/s

110PE-S Entl.
 WAS 1.26 l/s